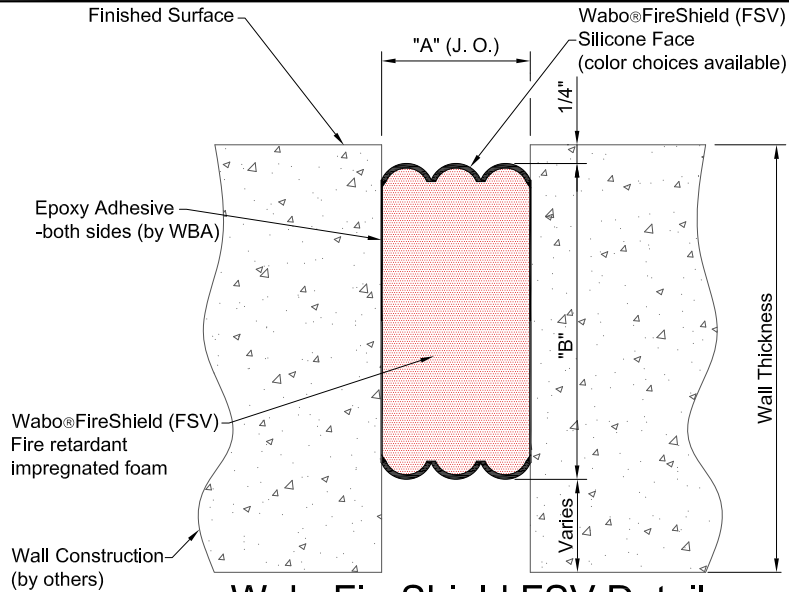


**Notes:**

- 1.) Please refer to the installation guide for information on splices, terminations, transitions, and additional details concerning adjacent construction.
- 2.) Minimum and maximum values shown on dimension chart are the limits for proper system performance. Unless otherwise noted, the dimension shown at "A" Mid is the recommended installation joint opening.
- 3.) The system is shipped in nominal standard lengths of 6.5ft (2 meters). If required, please consult with a WBA representative for the types and quantities of any chemical components needed for proper installation.
- 4.) Double-side configuration shown for reference only. Product available in one-sided, uncoated or Pick Resistant options as well. Available in custom colors. Contact your WBA Sales Representative for more information.
- 5.) Depth may vary (2", 3" or 4" deep) depending on UL Listing.
- 6.) For Gypsum to Gypsum detail, refer to Sheet 2 of 2.



**WaboFireShield FSV Detail**

Concrete to Concrete Condition  
NOT TO SCALE

Size when ordering @ Mean Temperature

"A" @ Mid. Nominal Install J.O.		Joint Opening "A"						System Depth "B"		Part Number for Ordering (50% mvmt) - GRAY P/N's LISTED. Other colors (P/N's) are available.			
		Min.		Max.		Total Mov.				2hr Rated @ 50% mvmt Coated Both Sides*** GRAY	3hr Rated @ 50% mvmt Coated Both Sides*** GRAY	2hr Rated @ 50% mvmt Coated One Side GRAY	3hr Rated @ 50% mvmt Coated One Side GRAY
in	mm	in	mm	in	mm	in	mm	in	mm				
0.50	13	0.25	6	0.75	19	0.50	13	4.00	102	FSV 60349	FSV 60247	FSV 60365	FSV 60262
1.00	25	0.50	13	1.50	38	1.00	25	4.00	102	FSV 60555	FSV 60253	FSV 60371	FSV 60269
1.50	40	0.75	19	2.25	57	1.50	38	4.00	102	FSV 60357	FSV 60255	FSV 60373	FSV 60271
2.00	50	1.00	25	3.00	76	2.00	51	4.00	102	FSV 60359	FSV 60257	FSV 60375	FSV 60273
2.50	65	1.25	32	3.75	95	2.50	64	4.00	102	FSV 60361	FSV 60259	FSV 60377	FSV 60275
3.00	76	1.50	38	4.50	114	3.00	76	4.00	102	FSV 60363	FSV 60261	FSV 60379	FSV 60277
3.50	89	1.75	44	5.25	133	3.50	89	4.00	102	FSV 60534	FSV 60536	FSV 60535	(not avail. in 3.5" size)
4.00	102	2.00	51	6.00	152	4.00	102	4.00	102	FSV 60537	FSV 60538	(not avail. in 4.0" size)	(not avail. in 4.0" size)
4.50	114	2.25	57	6.75	171	4.50	114	4.00	102	FSV 60539	FSV 60540	(not avail. in 4.5" size)	(not avail. in 4.5" size)
5.00	127	2.50	64	7.50	191	5.00	127	4.00	102	FSV 60541	FSV 60542	(not avail. in 5.0" size)	(not avail. in 5.0" size)
5.50	140	2.75	70	8.25	210	5.50	140	4.00	102	FSV 60543	FSV 60544	(not avail. in 5.5" size)	(not avail. in 5.5" size)
6.00	152	3.00	76	9.00	229	6.00	152	4.00	102	FSV 60545	FSV 60546	(not avail. in 6.0" size)	(not avail. in 6.0" size)

Other intermediate sizes are available up to 4.5" w ide, contact WBA for details. Contact your WBA Representative with your special design needs.

PROJECT NAME: \_\_\_\_\_

PROJECT LOCATION: \_\_\_\_\_

DRAWING DESCRIPTION: **WaboFireShield (Vert 50% Mvmt)**

DATE: 09/29/2016 MODEL: FSV



Watson Bowman Acme Corp.  
95 Pineview Drive Amherst, NY 14228  
phone: (716) 691-7566 fax: (716) 691-9239  
www.wbacorp.com



Information provided herein, including but not limited to, any drawing, design, photograph, graphic, or statement(s) ("Materials") are proprietary and the property of Watson Bowman Acme Corporation ("Company"). Reproduction, translation, or reduction to any electronic medium or machine readable form, in whole or part, is strictly prohibited, except for the express purpose for which it has been furnished, without prior written consent of Company. All Materials contained herein are provided by Company for information purposes only. Company reserves the right to amend or withdraw any information contained in the Materials without notice. All technical or other advice by Company, whether verbal or written, concerning products, or the use of products in specific situations ("Advice") is given by Company and is used at the Users own risk.

REVISION NO: 2

SHEET NO: 1 of 2

DRAWING NO: 31796