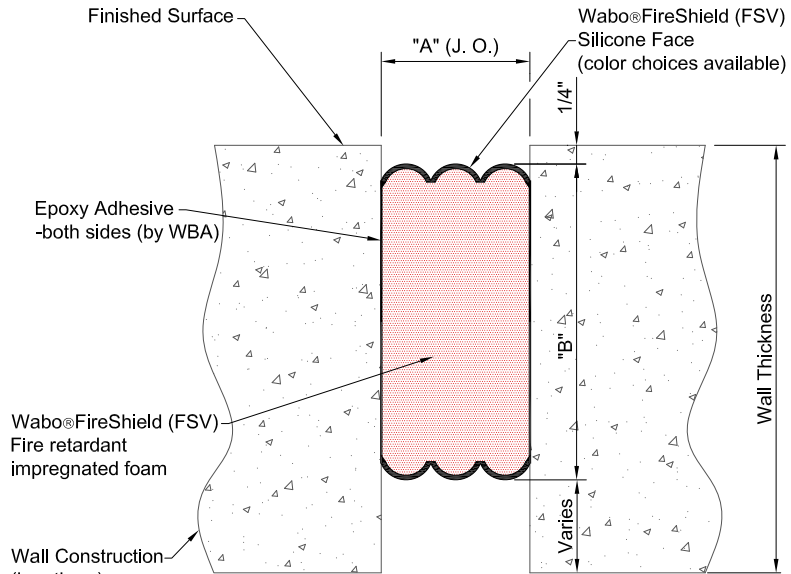


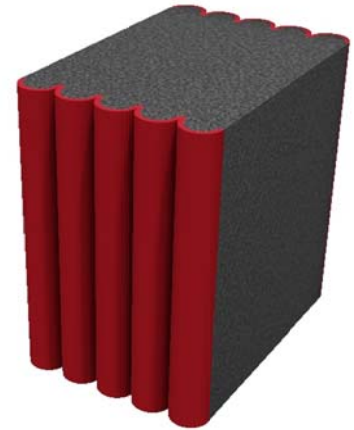
Notes:

- 1.) Please refer to the installation guide for information on splices, terminations, transitions, and additional details concerning adjacent construction.
- 2.) Minimum and maximum values shown on dimension chart are the limits for proper system performance. Unless otherwise noted, the dimension shown at "A" Mid is the recommended installation joint opening.
- 3.) The system is shipped in nominal standard lengths of 6.5ft (2 meters). If required, please consult with a WBA representative for the types and quantities of any chemical components needed for proper installation.
- 4.) Double-side configuration shown for reference only. Product available in one-sided, uncoated or Pick Resistant options as well. Available in custom colors. Contact your WBA Sales Representative for more information.
- 5.) Depth may vary (2", 3" or 4" deep) depending on UL Listing.
- 6.) For Gypsum to Gypsum detail, refer to Sheet 2 of 2.



WaboFireShield FSV Detail

Concrete to Concrete Condition
NOT TO SCALE



Size when ordering @ Mean Temperature		Part Number for Ordering (25% mvmt) - GRAY P/N's LISTED. Other colors (P/N's) are available.											
"A" @ Mid.		Joint Opening "A"				System Depth "B"		2hr Rated @ 25% mvmt Coated Both Sides	3hr Rated @ 25% mvmt Coated Both Sides	2hr Rated @ 25% mvmt Coated One Side	3hr Rated @ 25% mvmt Coated One Side		
Nominal Install J.O.		Min.	Max.	Total Mov.			GRAY	GRAY	GRAY	GRAY			
in	mm	in	mm	in	mm	in	mm						
0.50	13	0.38	10	0.63	16	0.25	6	4.00	102	FSV 60101	FSV 60279	FSV 60364	FSV 60295
1.00	25	0.75	19	1.25	32	0.50	13	4.00	102	FSV 60119	FSV 60285	FSV 60371	FSV 60301
1.50	40	1.13	29	1.88	48	0.75	19	4.00	102	FSV 60131	FSV 60287	FSV 60373	FSV 60303
2.00	50	1.50	38	2.50	64	1.00	25	4.00	102	FSV 60143	FSV 60289	FSV 60375	FSV 60305
2.50	65	1.88	48	3.13	80	1.25	32	4.00	102	FSV 60155	FSV 60291	FSV 60377	FSV 60307
3.00	76	2.25	57	3.75	95	1.50	38	4.00	102	FSV 60167	FSV 60293	FSV 60379	FSV 60309
3.50	89	2.63	67	4.38	111	1.75	44	4.00	102	FSV 60179	(not avail. in 3.5" size)	(not avail. in 3.5" size)	(not avail. in 3.5" size)
4.00	102	3.00	76	5.00	127	2.00	51	4.00	102	FSV 60191	(not avail. in 4.0" size)	(not avail. in 4.0" size)	(not avail. in 4.0" size)
4.50	114	3.38	86	5.63	143	2.25	57	4.00	102	FSV 60203	(not avail. in 4.5" size)	(not avail. in 4.5" size)	(not avail. in 4.5" size)

Other intermediate sizes are available up to 4.5" wide, contact WBA for details. Contact your WBA Representative with your special design needs.

PROJECT NAME: -

PROJECT LOCATION: -

DRAWING DESCRIPTION:
WaboFireShield (Vert 25% Mvmt)

DATE: 09/29/2016 MODEL: FSV



Watson Bowman Acme Corp.
95 Pineview Drive Amherst, NY 14228
phone: (716) 691-7566 fax: (716) 691-9239
www.wbacorp.com



Information provided herein, including but not limited to, any drawing, design, photograph, graphic, or statement(s) ("Materials") are proprietary and the property of Watson Bowman Acme Corporation ("Company"). Reproduction, translation, or reduction to any electronic medium or machine readable form, in whole or part, is strictly prohibited, except for the express purpose for which it has been furnished, without prior written consent of Company. All Materials contained herein are provided by Company for information purposes only. Company reserves the right to amend or withdraw any information contained in the Materials without notice. All technical or other advice by Company, whether verbal or written, concerning products, or the use of products in specific situations ("Advice") is given by Company and is used at the Users own risk.

REVISION NO: -

SHEET NO: 1 of 2

DRAWING NO: A-33831